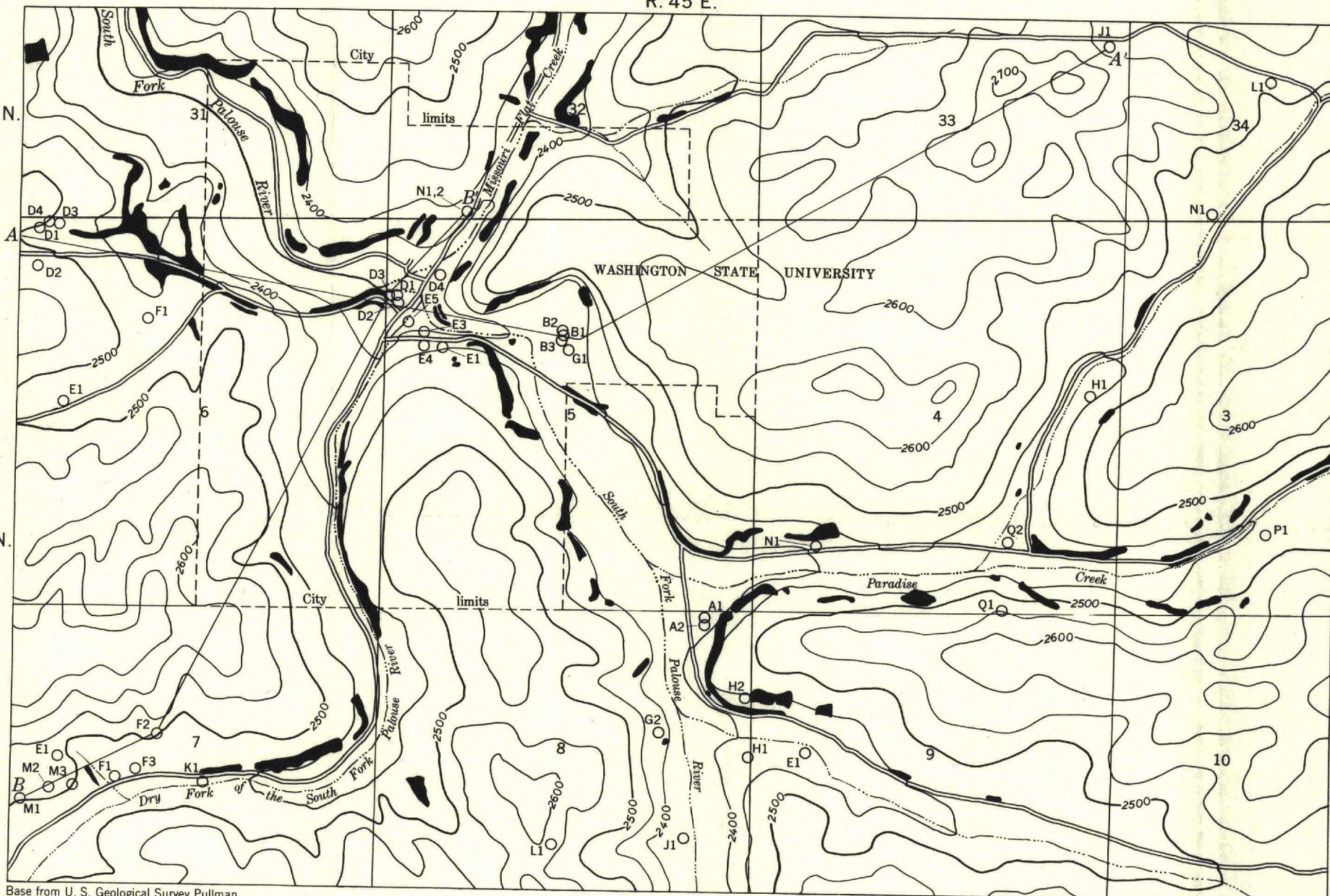


R. 45 E.

T. 15 N.

T. 14 N.




Base from U. S. Geological Survey Pullman
topographic quadrangle, scale 1:125 000

By B. L. Foxworthy and R. L. Washburn, 1955

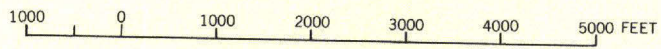
EXPLANATION

○L1
Well


Outcrop of Columbia River basalt

A—A'
Line of geologic section
shown on figure 3

MAP OF PULLMAN AND VICINITY, WASHINGTON SHOWING WELLS AND BASALT EXPOSURES



CONTOUR INTERVAL 50 FEET
DATUM IS MEAN SEA LEVEL