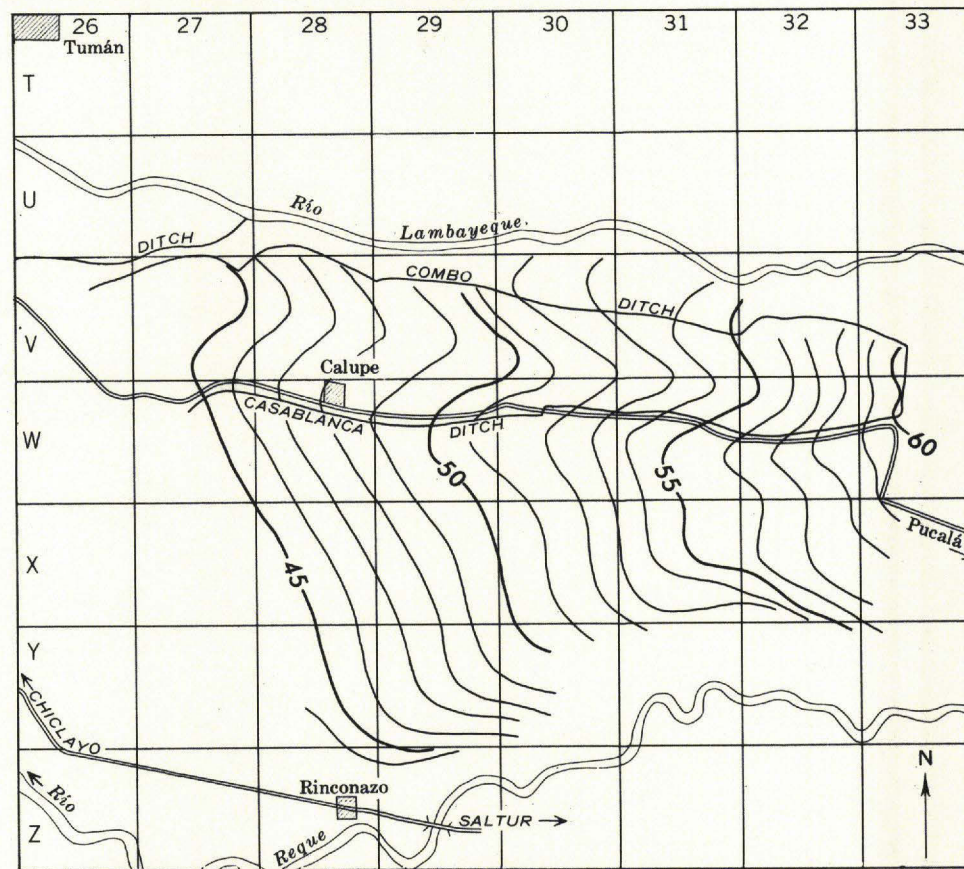
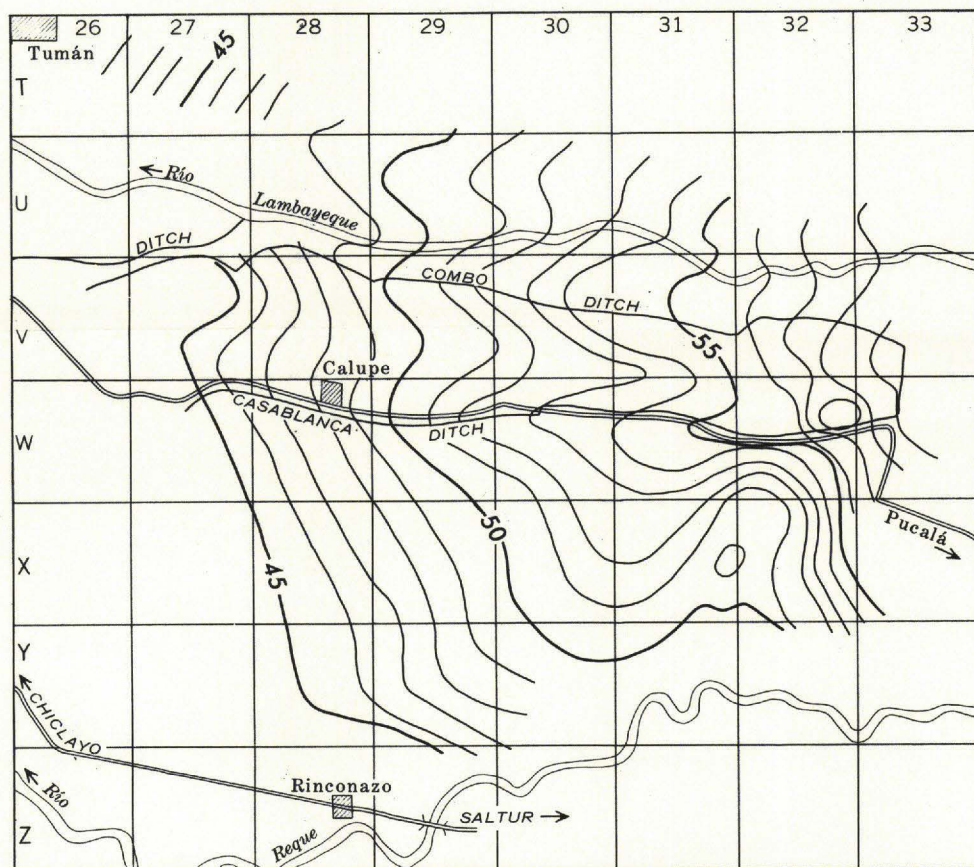


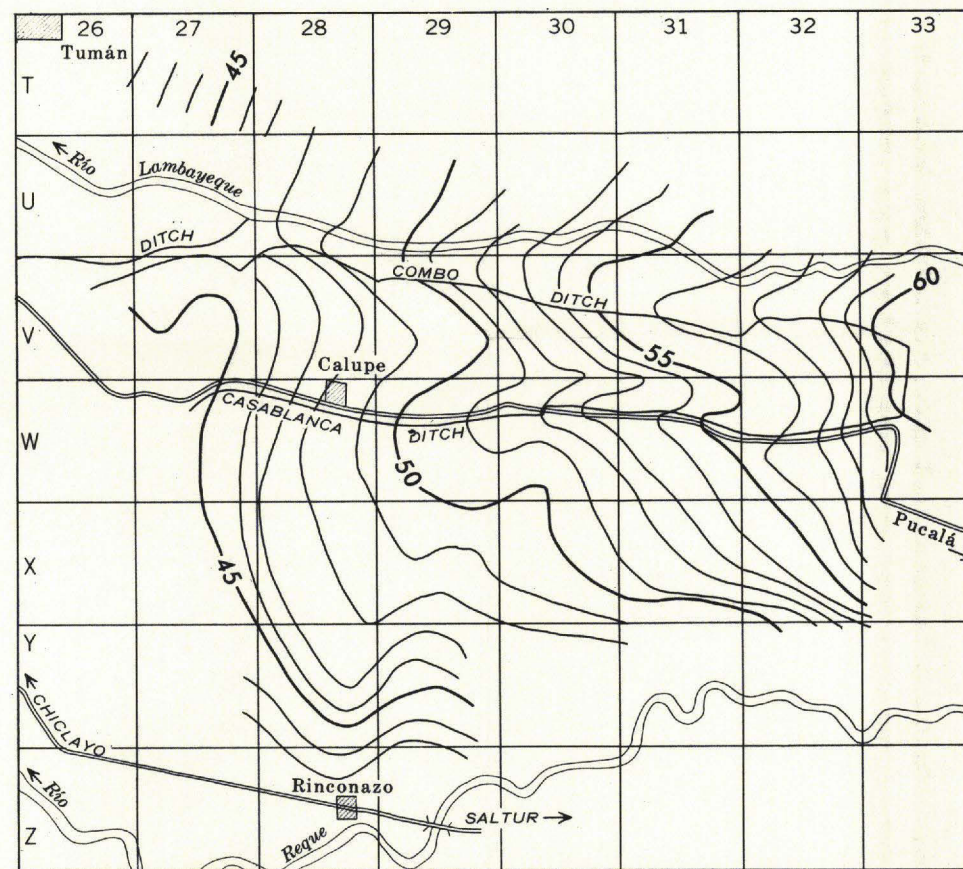
MAY-JUNE 1956. WELLS MEASURED DURING PRELIMINARY TEST PUMPING FOR CALUPE AQUIFER TEST ARE SHOWN



AUGUST 1956. ABOUT 3 WEEKS BEFORE THE BEGINNING OF IRRIGATION PUMPING FOR THE 1956-57 SEASON



APRIL 1957. ABOUT 6 WEEKS AFTER THE END OF IRRIGATION PUMPING FOR THE 1956-57 SEASON



APRIL 1958. ABOUT 40 DAYS AFTER THE END OF IRRIGATION PUMPING FOR THE 1957-58 SEASON

EXPLANATION

● Discharge well

○ Observation well

—45—
Water-table contour
Interval 1 meter
Datum is assumed

COMBO DITCH
Main irrigation ditch

MAPS OF WATER TABLE FOR SELECTED DATES AT HACIENDA CALUPE, LAMBAYEQUE VALLEY,
DEPARTMENT OF LAMBAYEQUE, NORTHERN PERU

