

89°45' R. 6 E.

40' R. 7 E.

89°35'

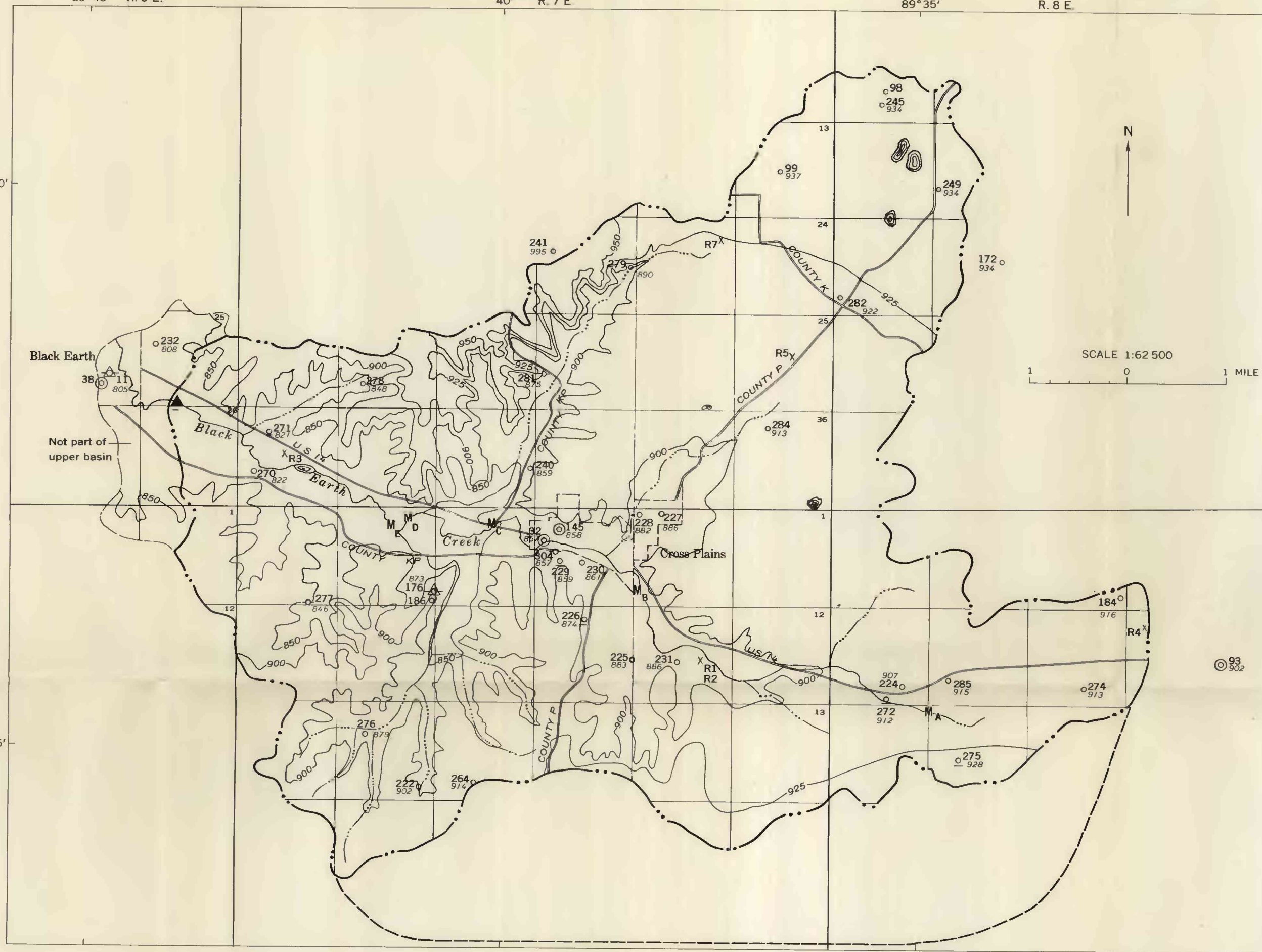
R. 8 E.

43°10'

43°05'

T. 8 N.

T. 7 N.



EXPLANATION

- ₂₇₀
○₈₂₂
Domestic or stock well
- ◎₁₄₅
◎₈₅₈
Municipal or industrial well
- ₃₀₄
○₈₅₇
Unused well
- △₁₁
△₈₀₅
Well equipped with a recorder
- Upright number at well is serial number. Slanting number is altitude of water surface
- ▲
Stream gage
- M_B
Miscellaneous-measurement gaging site
- X R₅
Rock-sampling site
- Water-sampling site, for chemical analysis
- 900 —
Contour line on piezometric surface
Contour interval 50 feet except for 925-foot contour. Datum is mean sea level
- - - -
Ground-water divide
- · - · -
Boundary of drainage basin

Base from U. S. Geological Survey topographic quadrangle: Cross Plains, 15', 1907

MAP OF UPPER BLACK EARTH CREEK BASIN, WISCONSIN, SHOWING THE PIEZOMETRIC SURFACE IN JULY 1958