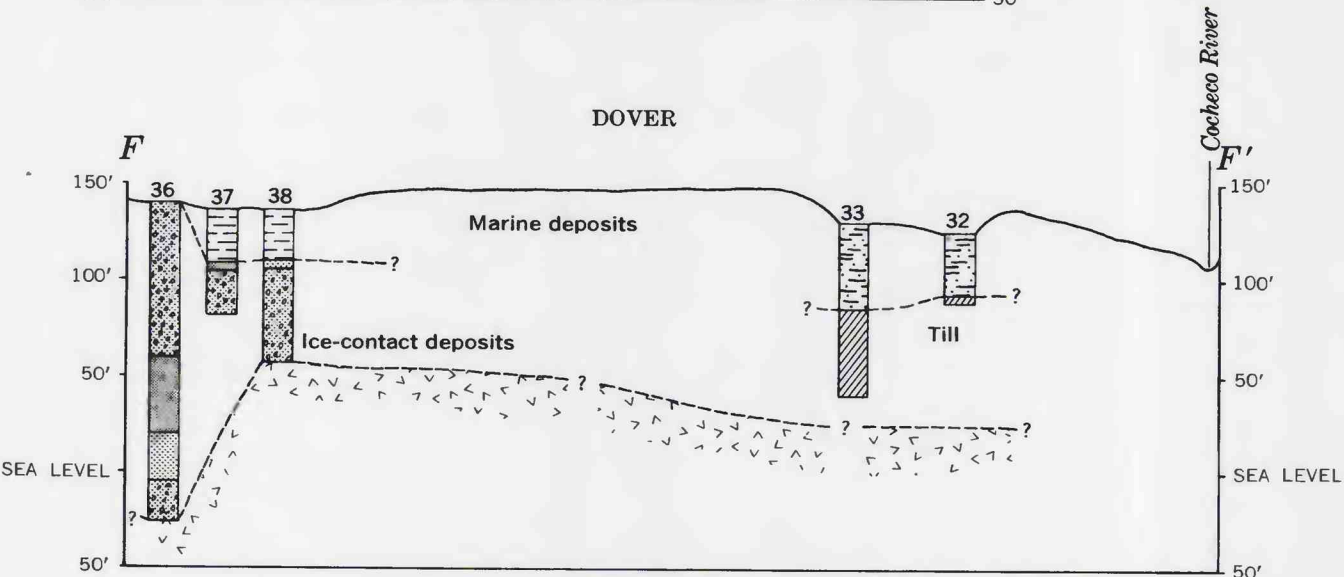
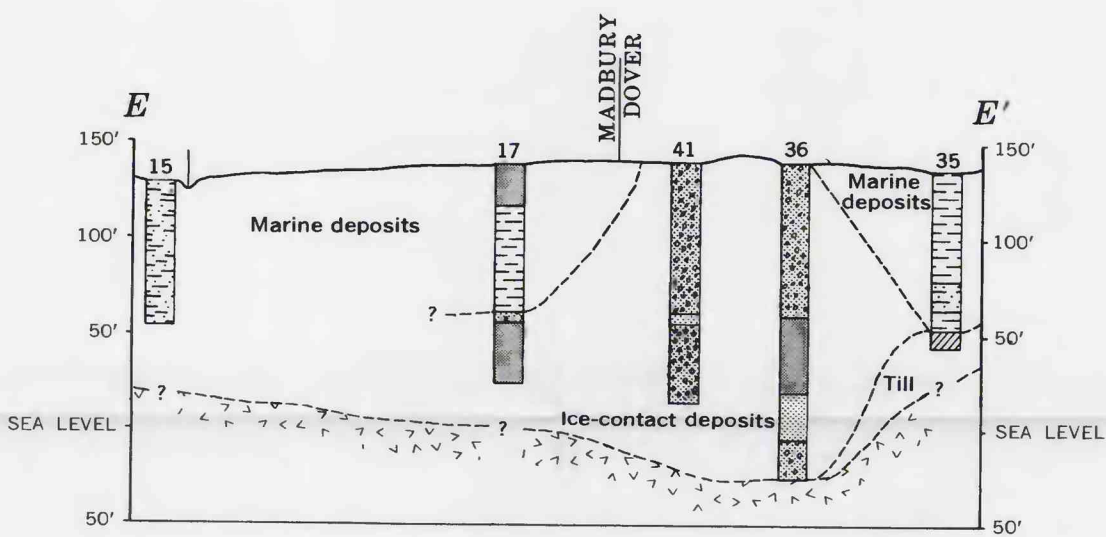
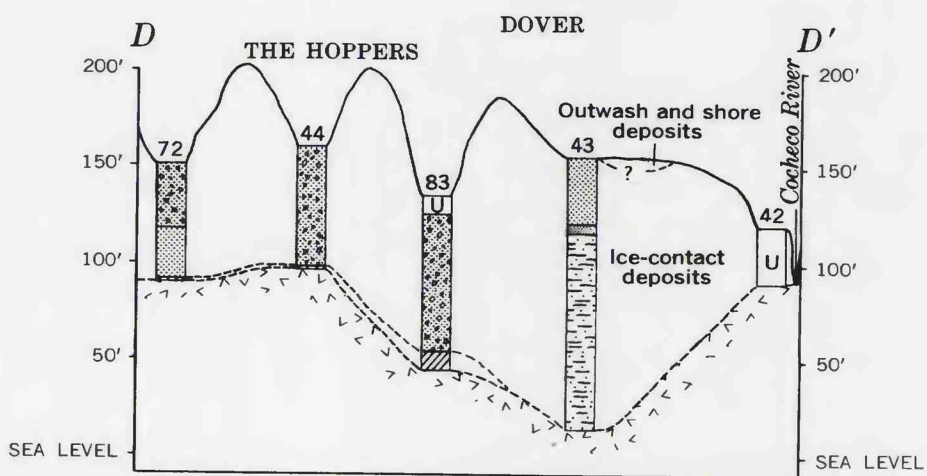


Geology by Edward Bradley, 1957

EXPLANATION

- | | | | |
|-------------|--|----------------------------|------------|
| Recent | | Alluvium | QUATERNARY |
| | | Outwash and shore deposits | |
| Pleistocene | | Marine deposits | |
| | | Ice-contact deposits | |
| | | Till | |
-
- | | | |
|--|------|--------------------|
| | 17 | Well |
| | 31 | Public-supply well |
| | 32 | Test hole |
| | Sp 1 | Spring |
| | 80 | Bedrock well |
- Location of Area B shown on Plate 2



EXPLANATION FOR SECTIONS

- | | | | |
|--|---|--|--|
| | Sand and gravel | | Fine sand; sandy silt |
| | Sand | | Bedrock |
| | Clay; hard clay | | Sandy clay; clay and sand; silty clay |
| | Unconsolidated deposits, undifferentiated | | Till (hardpan); compact clay, silt, sand, and gravel |

1000 0 1000 2000 FEET

GEOLOGIC MAP AND SECTIONS OF AREA B SHOWING UNCONSOLIDATED DEPOSITS AND LOCATION OF SELECTED WELLS, TEST HOLES, AND SPRINGS