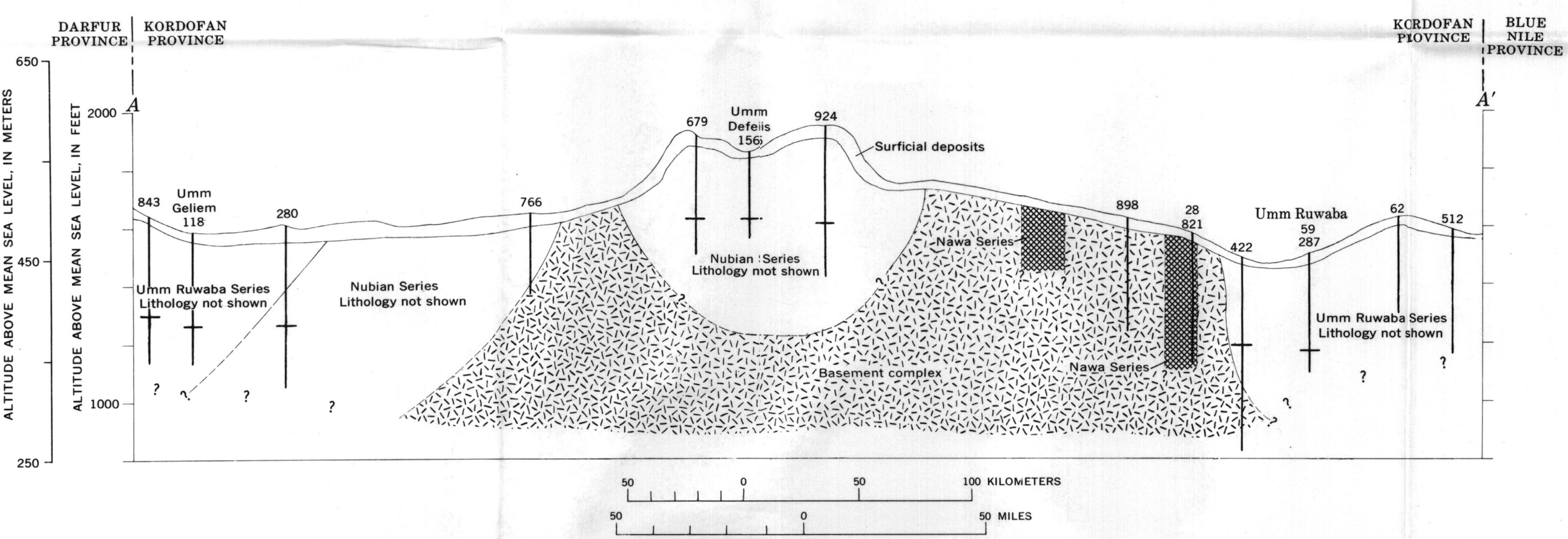


- EXPLANATION**
- MAP**
- Umm Ruwaba Series
Pliocene and Pleistocene
 - Nubian Series
Mesozoic
 - Nawa Series
Upper Paleozoic
 - Basement complex
Precambrian
- Approximate contact**
- 898 ○ 843
 - Producing Dry or abandoned
 - Drilled wells and serial numbers
 - 22
 - Dug well and serial number. Producing (Some dry during summer)
- SECTIONS**
- Note: Vertical scales greatly exaggerated
- Surficial deposits
Largely unconsolidated Qm sand and clay-plain deposits
 - Laterite
 - Sandstone
Occasionally pebbly
 - Silty or clayey sandstone
 - Mudstone
Locally pebbly in F-F'
 - Conglomerate
 - Interbedded sandstone and mudstone
 - Crystalline basement rocks
Predominantly granite, gneiss and schist
 - Fault block
- Approximate contact
Dashed where inferred; queried where doubtful
- 766
Drilled well and serial number
Bar indicates altitude of static water level

Base modified from Survey Department of Sudan. Scale 1:1,000,000, 1938



MAP AND SECTIONS SHOWING DISTRIBUTION OF SEDIMENTARY AND BASEMENT ROCKS AND LOCATION OF SELECTED WELLS, KORDOFAN PROVINCE, SUDAN