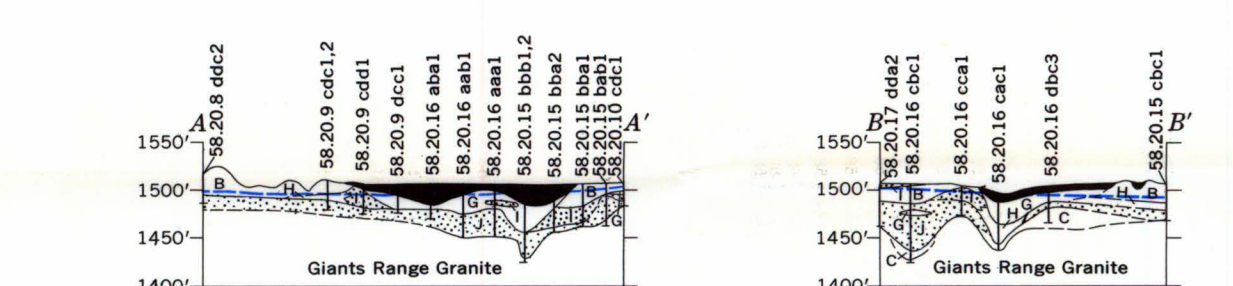
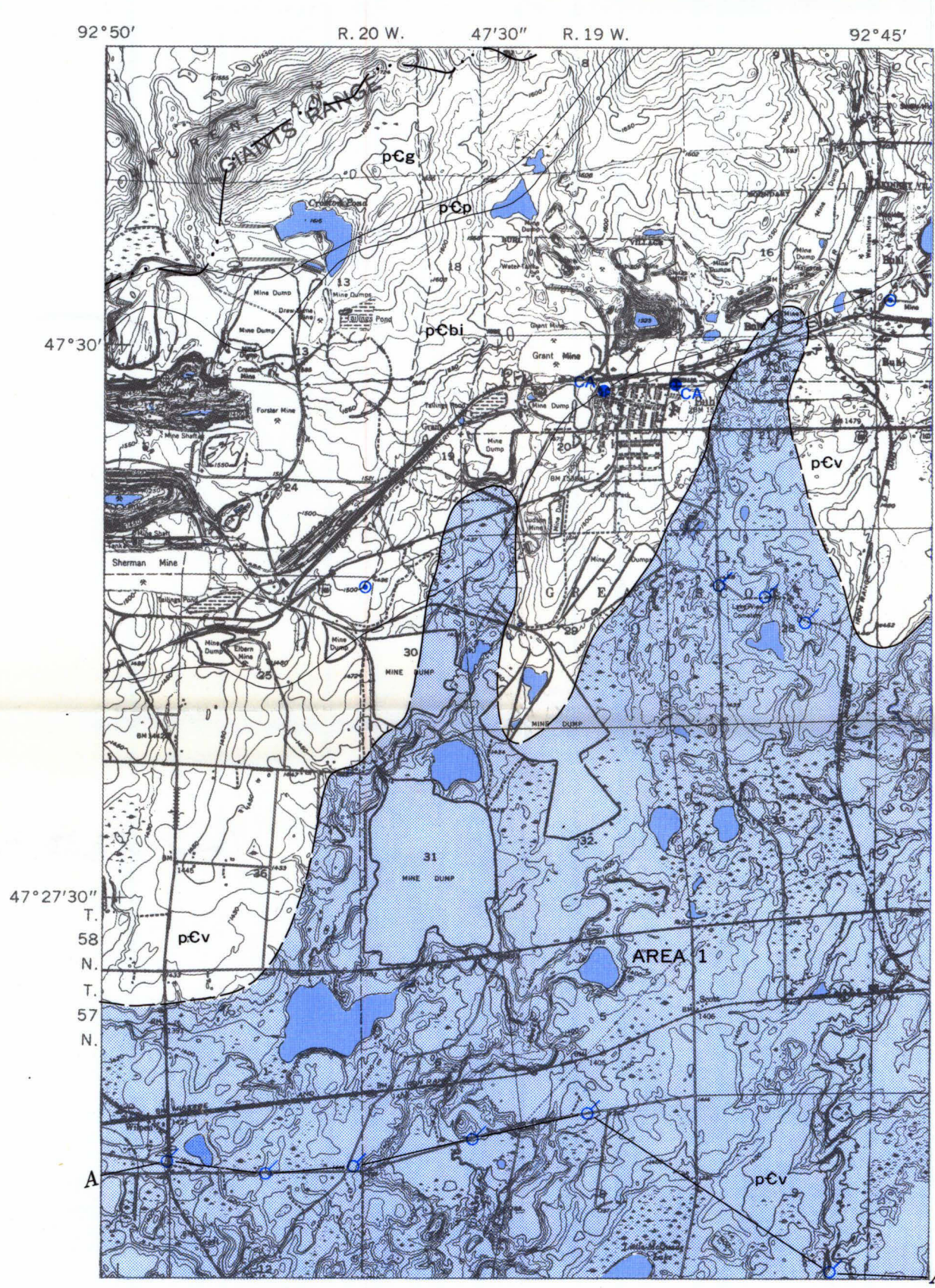


Base from U.S. Geological Survey topographic quadrangles: Buhl, 1951, Dewey Lake, 1955, and Hibbing, 1957

Bedrock contacts from Schwartz (1956, pl. 4) and unpublished Oliver Iron Mining Division maps. Geologic nomenclature from Goldich and others (1961, table 2)

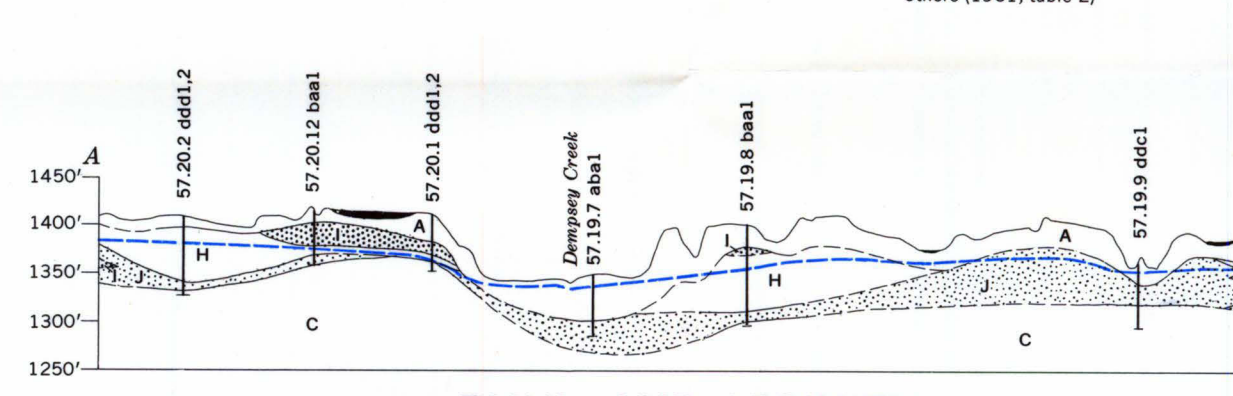


CHISHOLM AND VICINITY

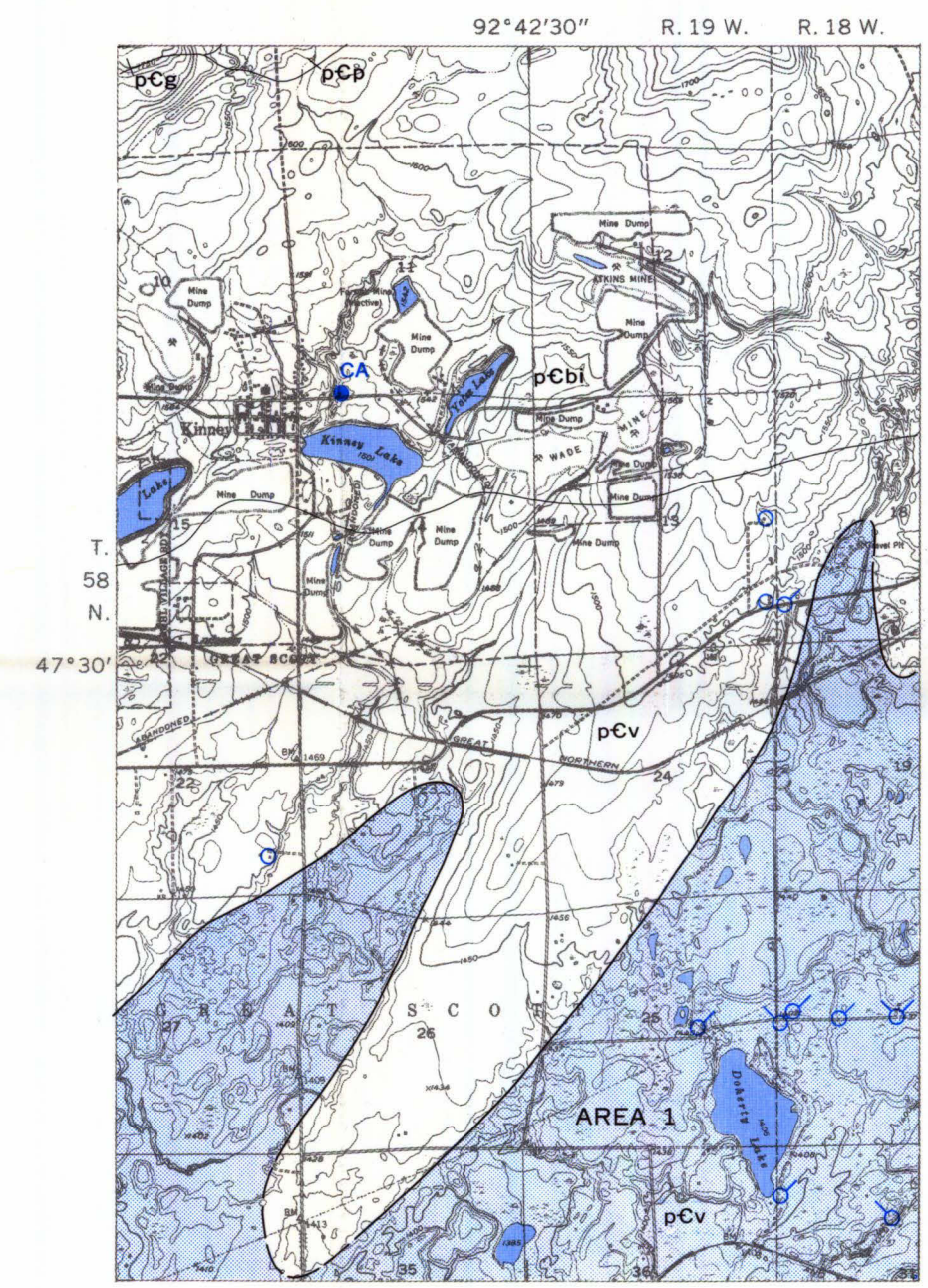


Base from U.S. Geological Survey topographic quadrangles: Buhl, 1951, Kinney, 1951, and Kirk, 1951

Bedrock contacts from Schwartz (1956, pl. 4) and unpublished Oliver Iron Mining Division maps. Geologic nomenclature from Goldich and others (1961, table 2)



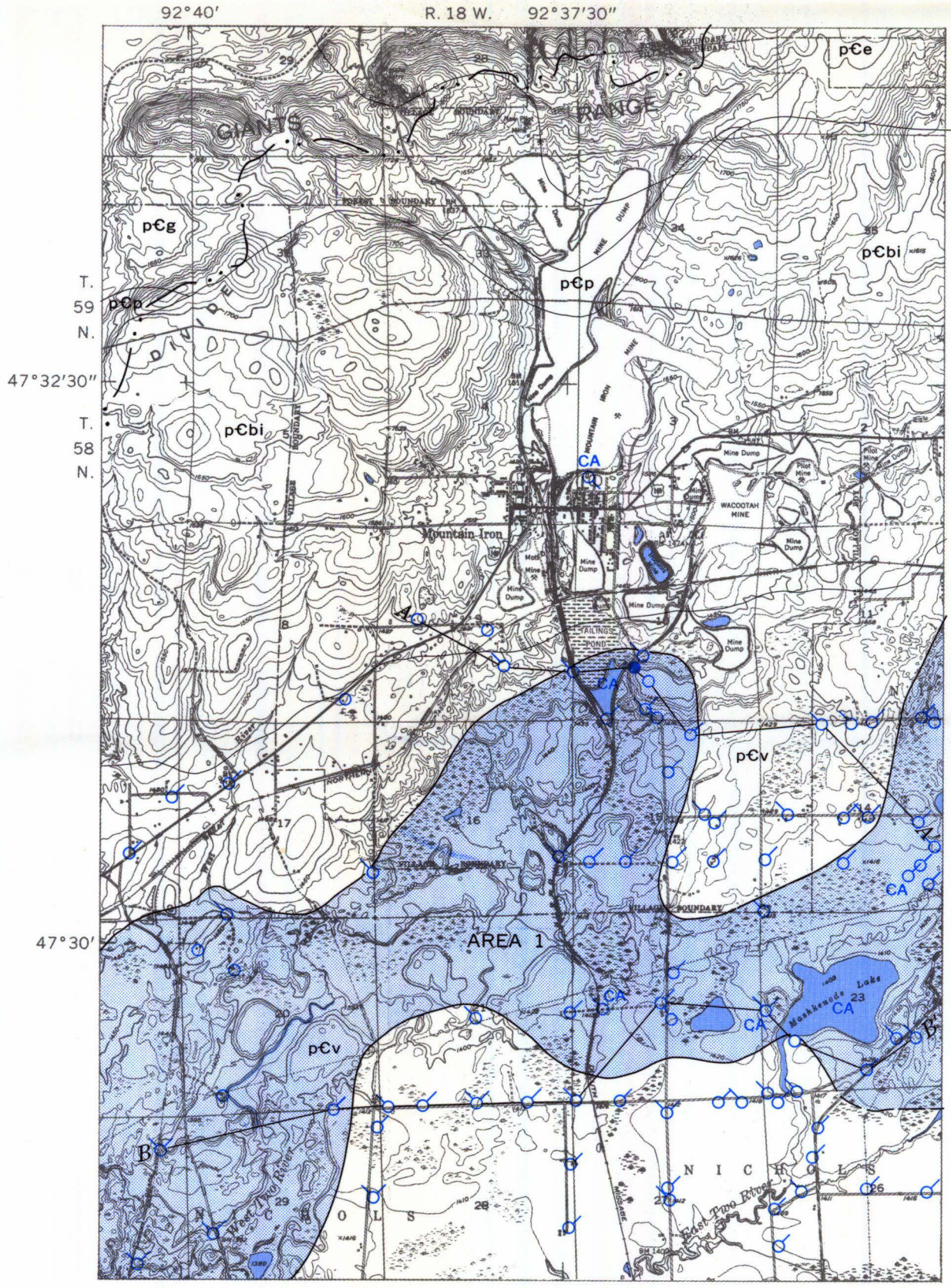
BUHL AND VICINITY



Base from U.S. Geological Survey topographic quadrangles: Kinney, 1951, and Kirk, 1951

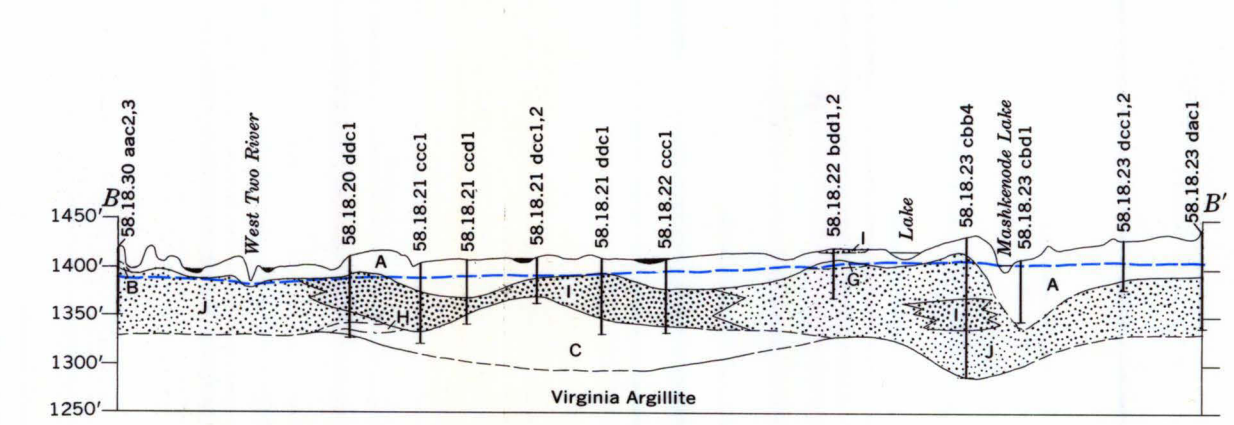
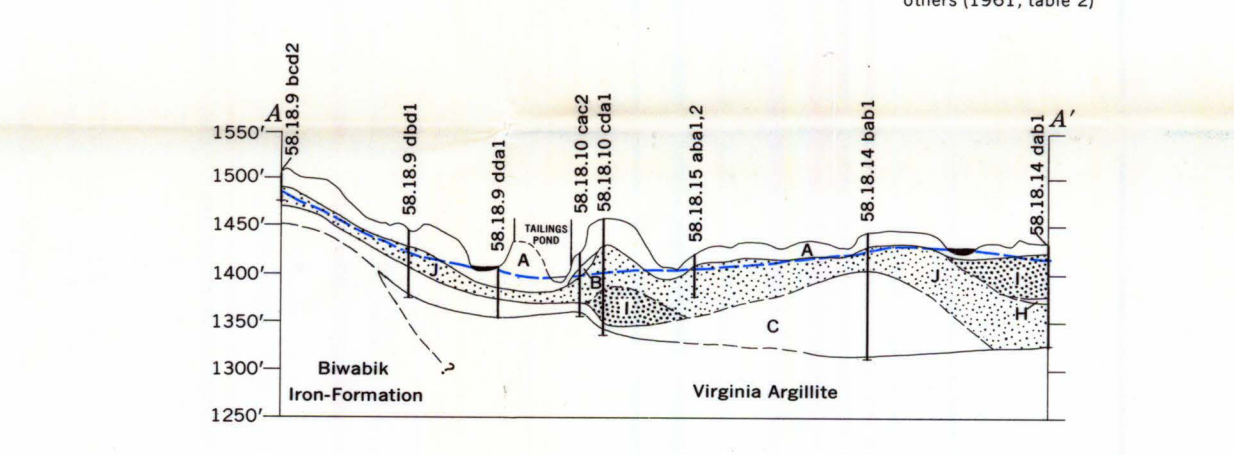
Bedrock contacts from Schwartz (1956, pl. 4) and unpublished Oliver Iron Mining Division maps. Geologic nomenclature from Goldich and others (1961, table 2)

KINNEY AND VICINITY

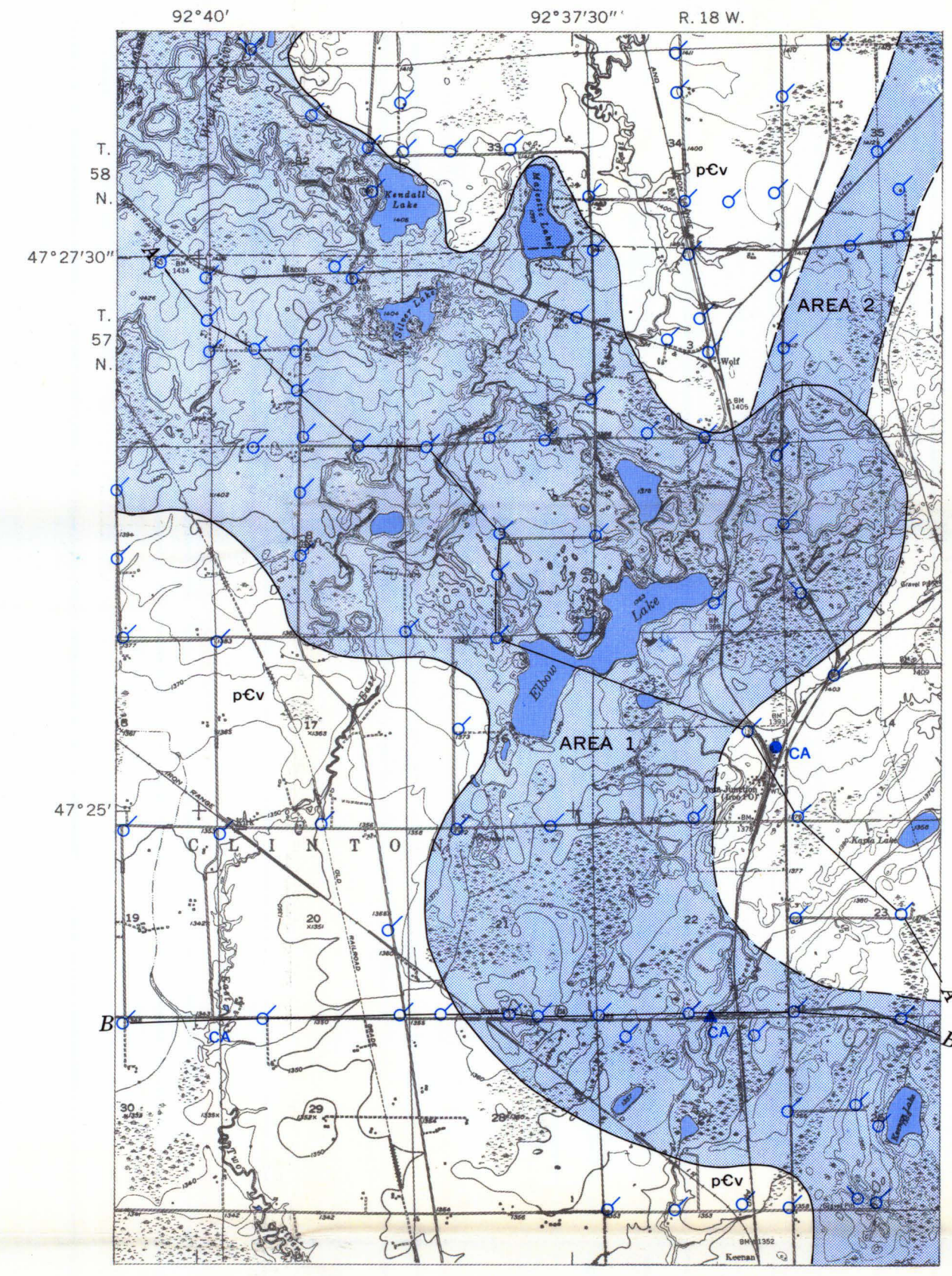
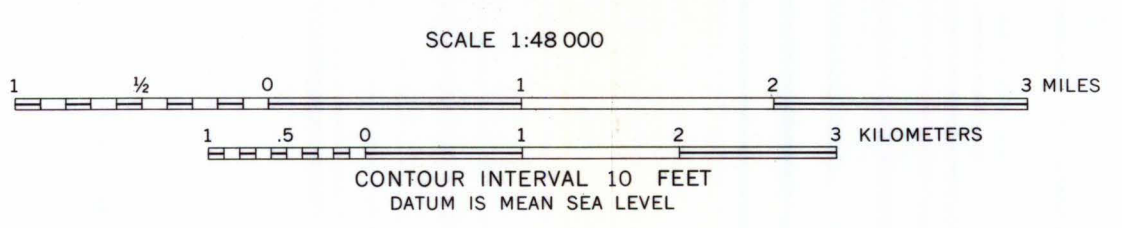


Base from U.S. Geological Survey topographic quadrangles: Eveleth, 1951, Kinney, 1951, Kirk, 1951, and Virginia, 1951

Bedrock contacts from Schwartz (1956, pl. 4) and unpublished Oliver Iron Mining Division maps. Geologic nomenclature from Goldich and others (1961, table 2)

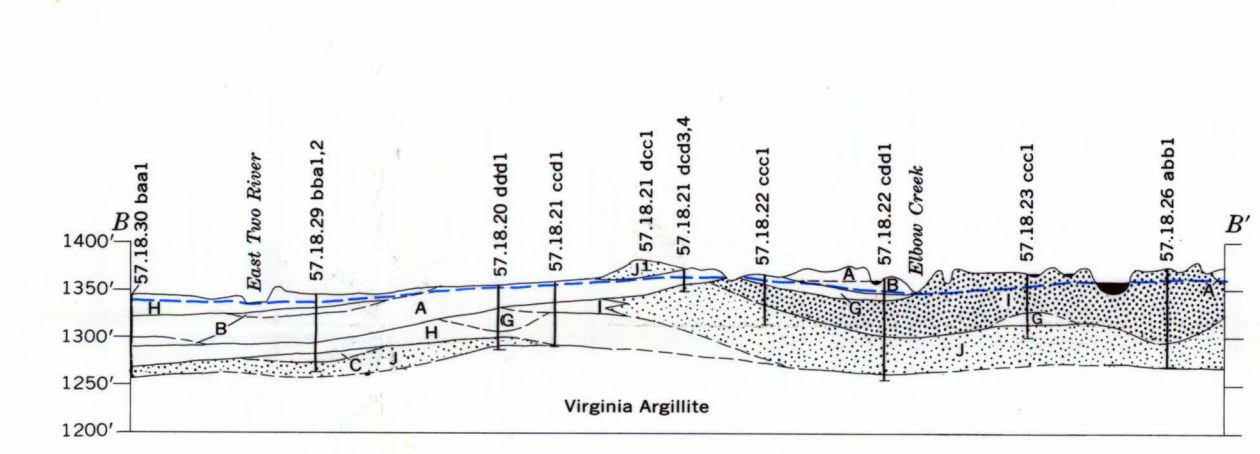
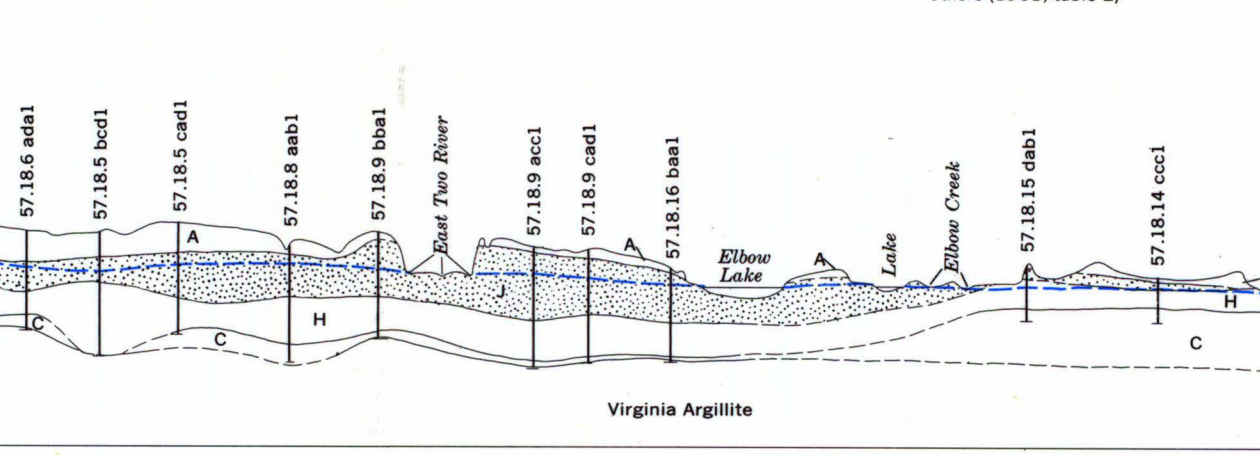


MOUNTAIN IRON AND VICINITY



Base from U.S. Geological Survey topographic quadrangles: Eveleth, 1951, and Kirk, 1951

Bedrock contacts from Schwartz (1956, pl. 4) and unpublished Oliver Iron Mining Division maps. Geologic nomenclature from Goldich and others (1961, table 2)



IRON JUNCTION AND VICINITY

BEDROCK GEOLOGY	EXPLANATION	SECTIONS
Middle Precambrian Animikie Group	Area of potential ground-water development from glacial drift Boundary dashed where indefinite	Swamp deposits
pCv Virginia Argillite	Municipal well	Till; clayey, reddish-brown to brownish gray
pCb Biwabik Iron-Formation	Industrial well	Till; clayey, silty, brown to gray; calcareous
pCp Pokagama Quartzite	USGS observation well	Till; sandy, gravelly, bouldery, gray to brown
UNCONFORMITY	Domestic well	Clay; silty to sandy clay
pCg Giants Range Granite	USGS test hole	Silt; clayey to sandy silt
UNCONFORMITY	Municipal test hole and (or) abandoned well	Sand; clayey to silty sand
pCe Ely Greenstone	Department of Iron Range Resources and Rehabilitation test hole	Sand and gravel; silty sand and gravel
UNCONFORMITY	Oliver Iron Mining Division test hole	Piezometric surface
LAURENTIAN DRAINAGE DIVIDE	Miscellaneous surface-water measurement site	Vertical exaggeration of sections x20
LAURENTIAN DRAINAGE DIVIDE	Chemical analysis See text	
LAURENTIAN DRAINAGE DIVIDE	CA	

