

EXPLANATION

- QUATERNARY**
- Qau Undifferentiated alluvium
 - Qb Basalt
 - Qag Alluvium and colluvium
- TERTIARY**
- Tip Intrusive porphyritic rocks
 - Tvu Volcanic rocks, undifferentiated
 - Tmc Muddy Creek Formation
 - Tvc Volcanic rocks and Claron Limestone
 - Tw Wasatch Formation

- Kwo Wahweap and Straight Cliffs Sandstones and other Cretaceous rocks
- Kws Wahweap and Straight Cliffs Sandstones
- Kka Kaiparowits Formation
- Kwa Wahweap Sandstone
- Kat Straight Cliffs Sandstone
- Ktr Tropic Shale
- Ktd Tropic and Dakota Formations
- Ku Cretaceous rocks, undivided

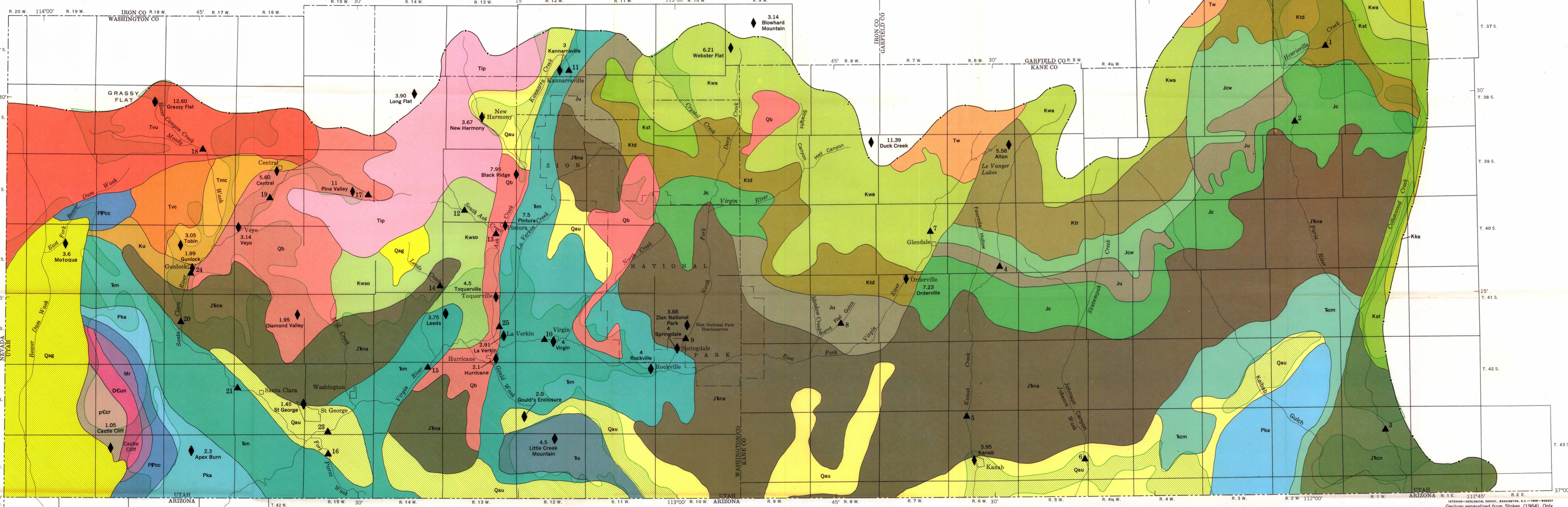
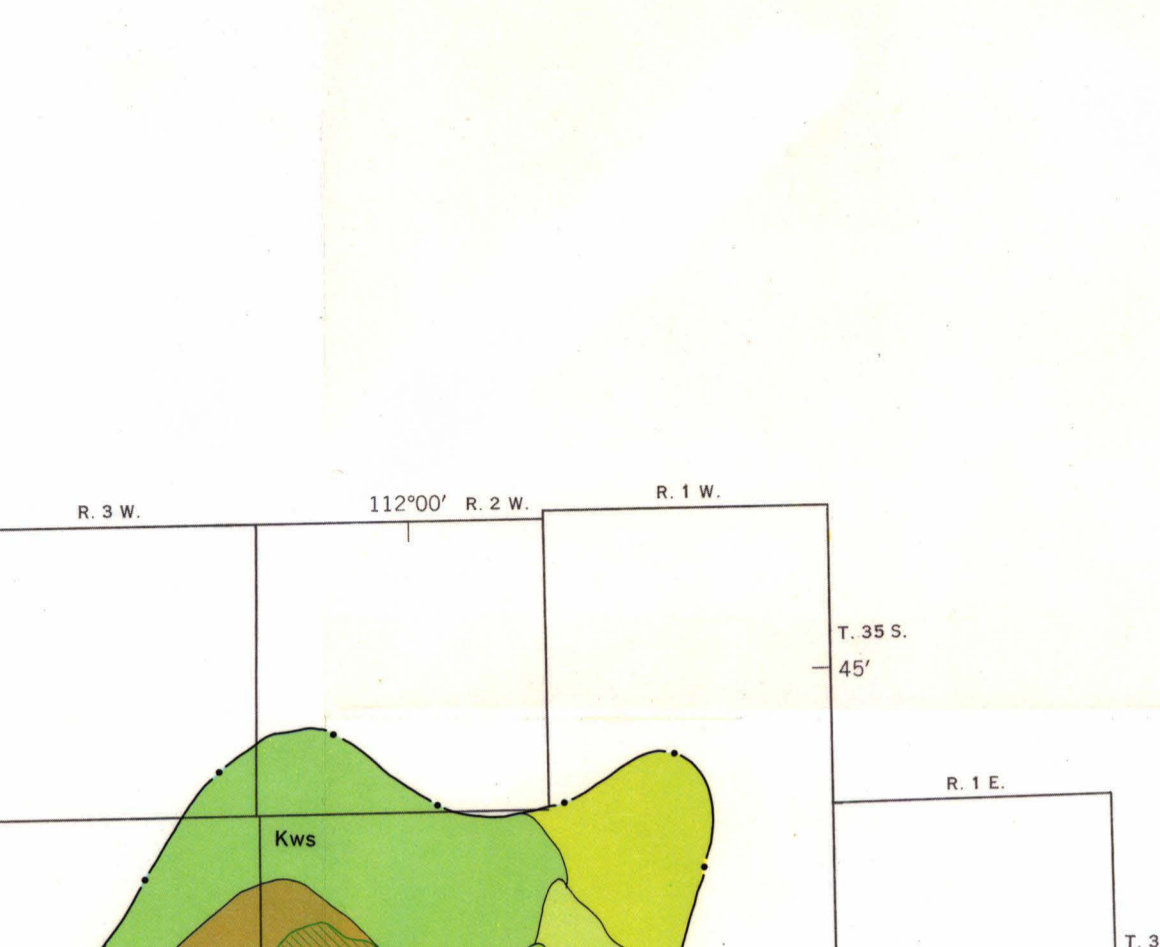
- CRETACEOUS**
- Tcl Claron Limestone
 - Kka Kaiparowits Formation
 - Kwa Wahweap Sandstone
 - Kat Straight Cliffs Sandstone
 - Ktr Tropic Shale
 - Ktd Tropic and Dakota Formations
 - Ku Cretaceous rocks, undivided

- TRIASSIC (?)**
- Jkn Carmel and Navajo Formations
 - Jna Navajo Sandstone
 - Jcm Chinle and Moenkopi Formations
 - Jm Moenkopi Formation
 - Jka Kaibab Limestone
 - Jpc Cocoonino Sandstone
 - Jpc Callville Limestone

- JURASSIC**
- Ju Jurassic rocks, undivided
 - Jc Carmel Formation, Jewell Member
 - Jna Navajo Sandstone
 - Jcm Chinle and Moenkopi Formations
 - Jm Moenkopi Formation
 - Jka Kaibab Limestone
 - Jpc Cocoonino Sandstone
 - Jpc Callville Limestone

- PERMIAN AND TRIASSIC**
- Mr Redwall Limestone
 - DCun Devonian and Cambrian rocks, undivided
 - pCcr Undifferentiated crystalline rocks

- PRECAMBRIAN MISSISSIPPIAN**
- 7 Stream-gaging and water-quality sampling site
 - 145 St George



MAP OF SOUTHWESTERN UTAH SHOWING STREAM-GAGING AND WATER-QUALITY SAMPLING SITES, GEOLOGY VEGETATION, AND PRECIPITATION AT SELECTED SITES DURING PERIOD DECEMBER 3-7, 1966

SCALE 1:250,000

5 0 5 10 15 20 25 MILES

5 0 5 10 15 20 25 KILOMETERS

Base from U.S. Geological Survey 1:250,000 series: Cedar City, Utah (1958); Escalante, Utah, and Arizona (1962); Grand Canyon, Arizona (1958)

APPROXIMATE MEAN DECLINATION, 1966

INTERIOR-GEOLOGICAL SURVEY, WASHINGTON, D.C.—1968-86807
Geology generalized from Stokes, (1964). Only predominant unit in any area is shown.