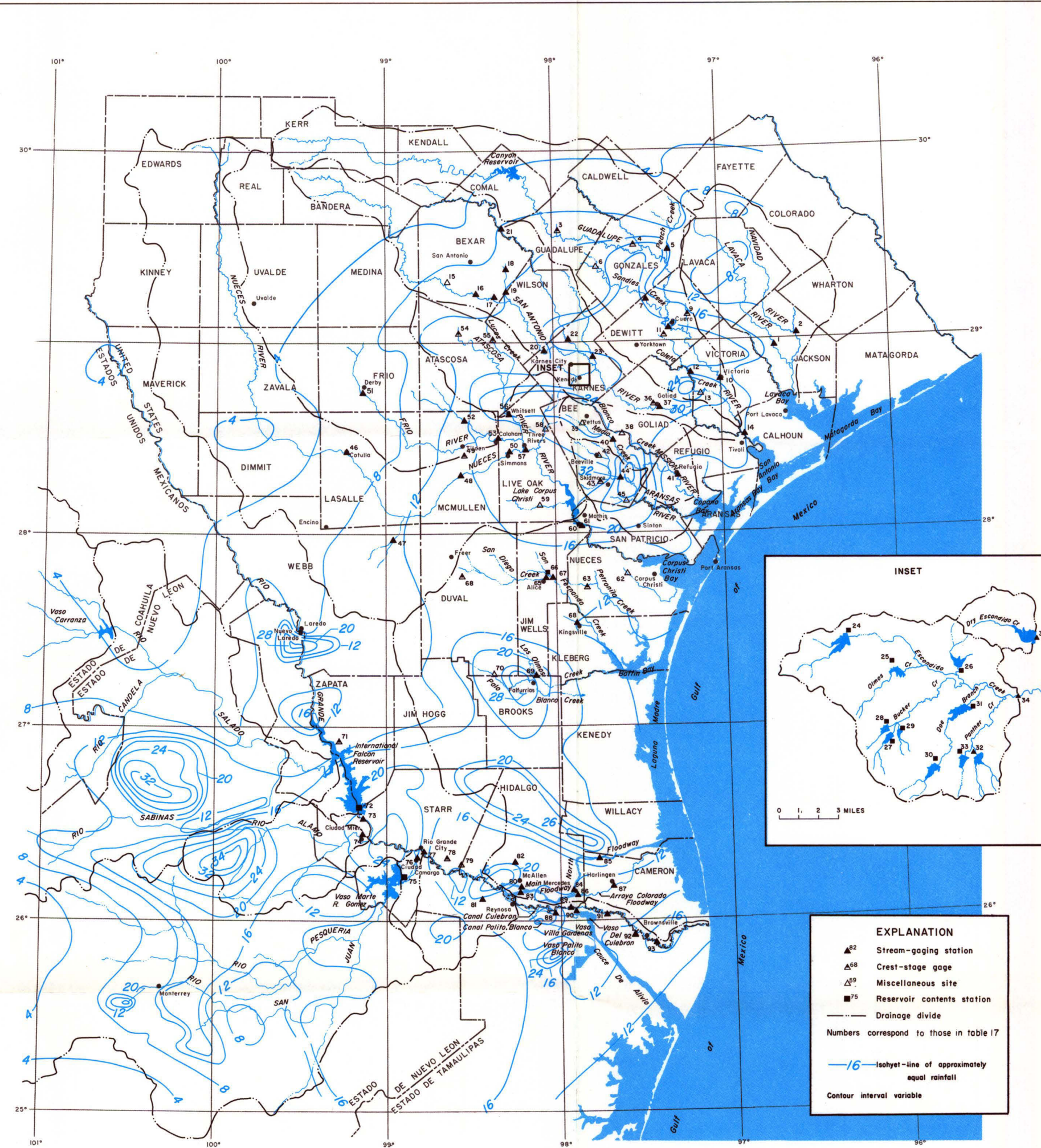
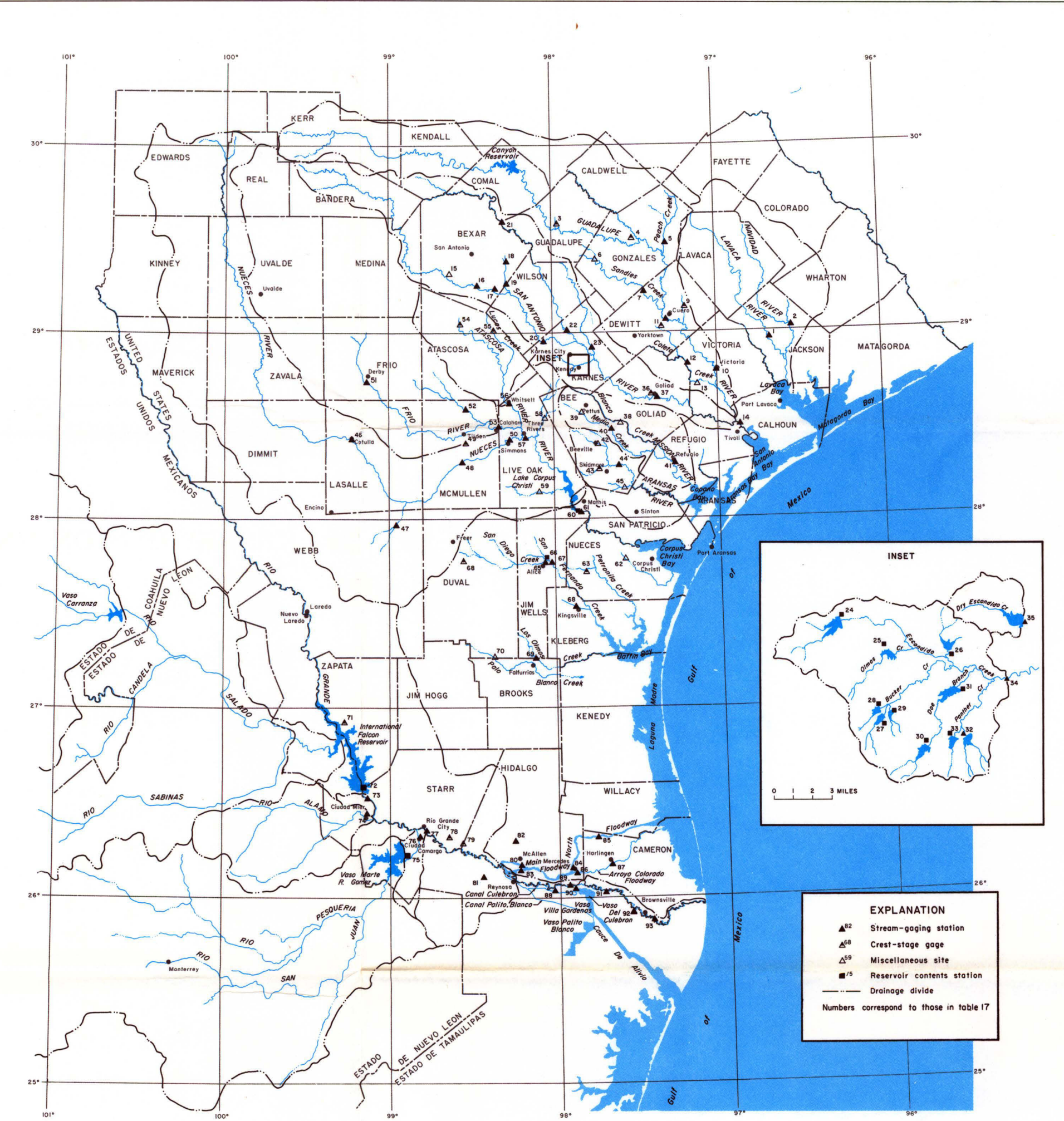


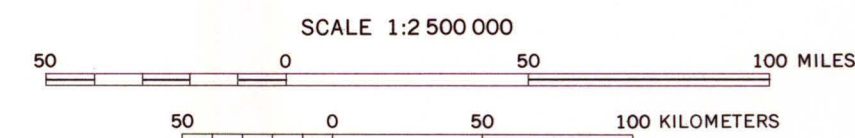
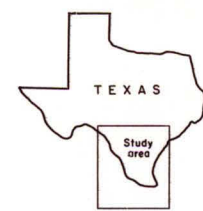
TRACK OF HURRICANE BEULAH AFTER MAKING LANDFALL



ISOHYETAL MAP FOR THE PERIOD SEPTEMBER 19-25, 1967



LOCATION OF FLOOD-DATA SITES



Base from U.S. Geological Survey 1:1,000,000

MAPS SHOWING DATA ON HURRICANE BEULAH, SEPTEMBER-OCTOBER 1967, SOUTH TEXAS AND NORTHEASTERN MEXICO