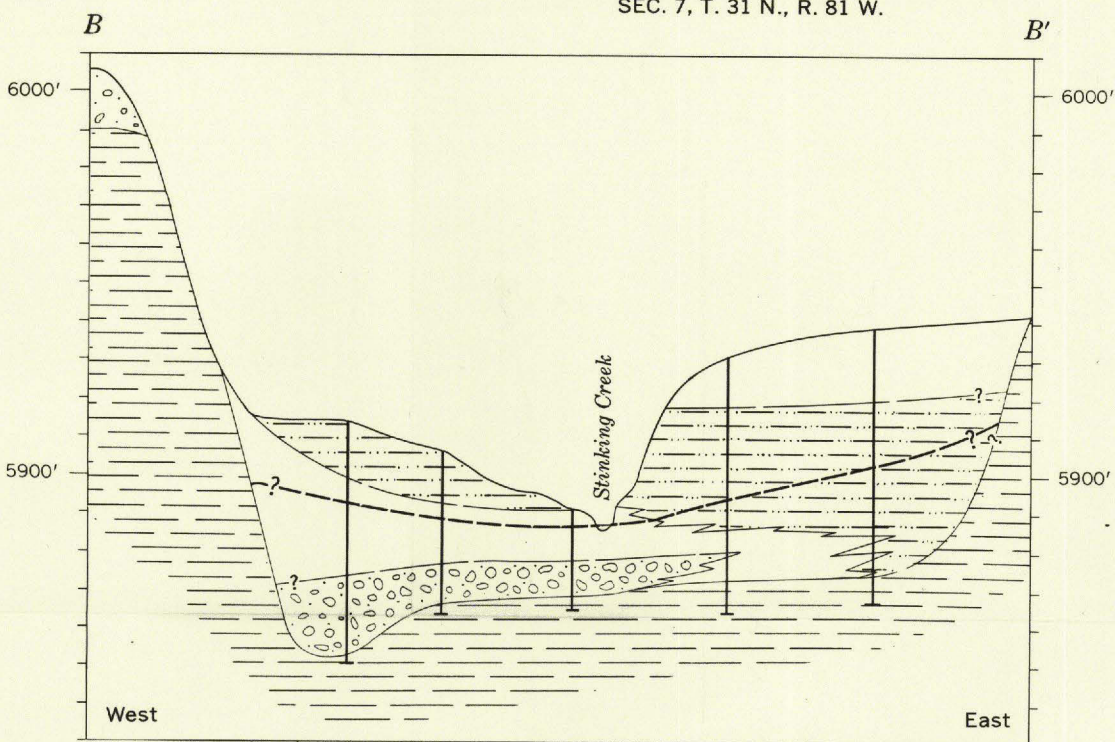
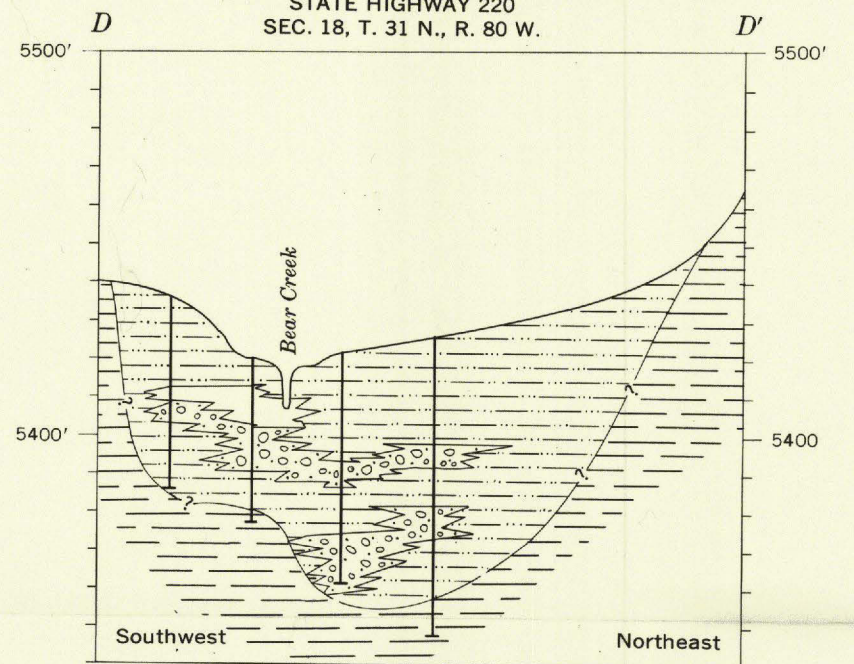


BATES CREEK AT WYOMING STATE HIGHWAY 220
SEC. 7, T. 31 N., R. 81 W.

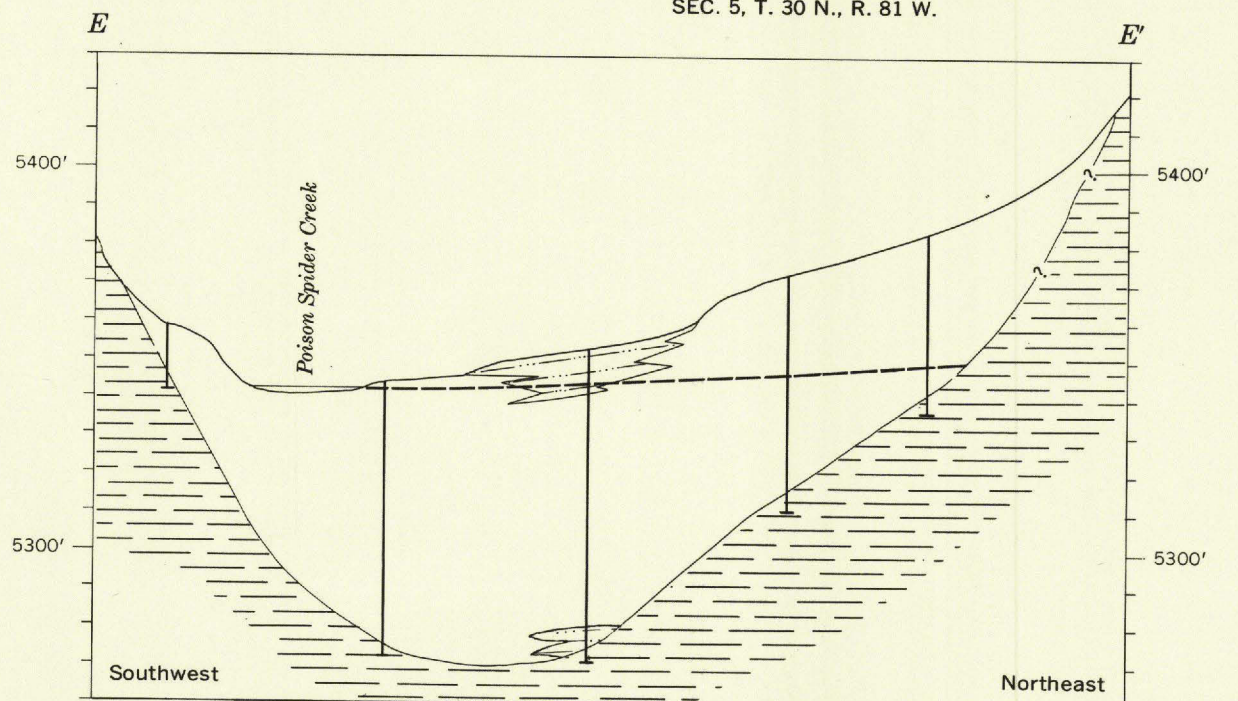
BATES CREEK 7 MILES UPSTREAM FROM WYOMING
STATE HIGHWAY 220
SEC. 18, T. 31 N., R. 80 W.



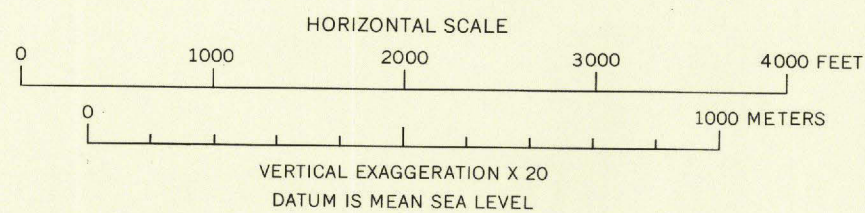
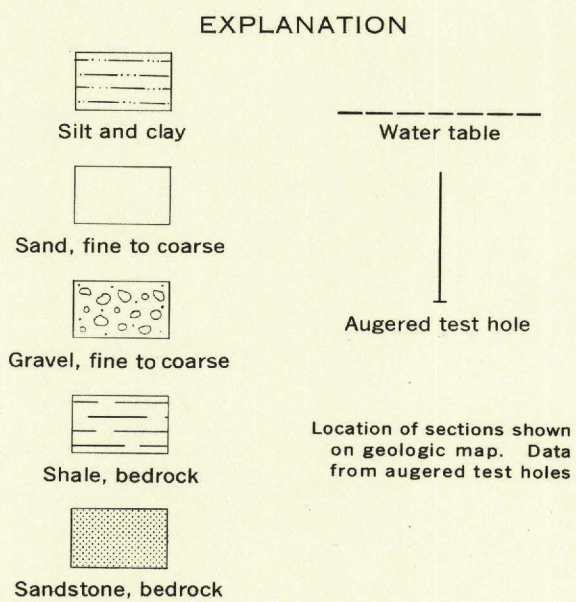
STINKING CREEK AT BATES HOLE STOCK TRAIL ROAD
SECS. 29 AND 30, T. 30 N., R. 80 W.



BEAR CREEK AT SPINDLE TOP ROAD
SEC. 5, T. 30 N., R. 81 W.



POISON SPIDER CREEK AT POISON SPIDER ROAD 5 MILES UPSTREAM FROM
NORTH PLATTE RIVER
SECS. 16 AND 17, T. 33 N., R. 81 W.



Geology by Marvin A. Crist

DIAGRAMMATIC SECTIONS SHOWING THE GENERAL LITHOLOGY OF ALLUVIUM ALONG
BATES CREEK, STINKING CREEK, BEAR CREEK, AND POISON SPIDER CREEK
NATRONA COUNTY, WYOMING