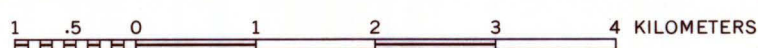
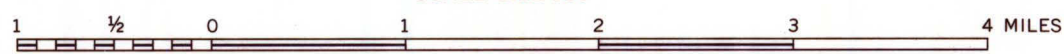


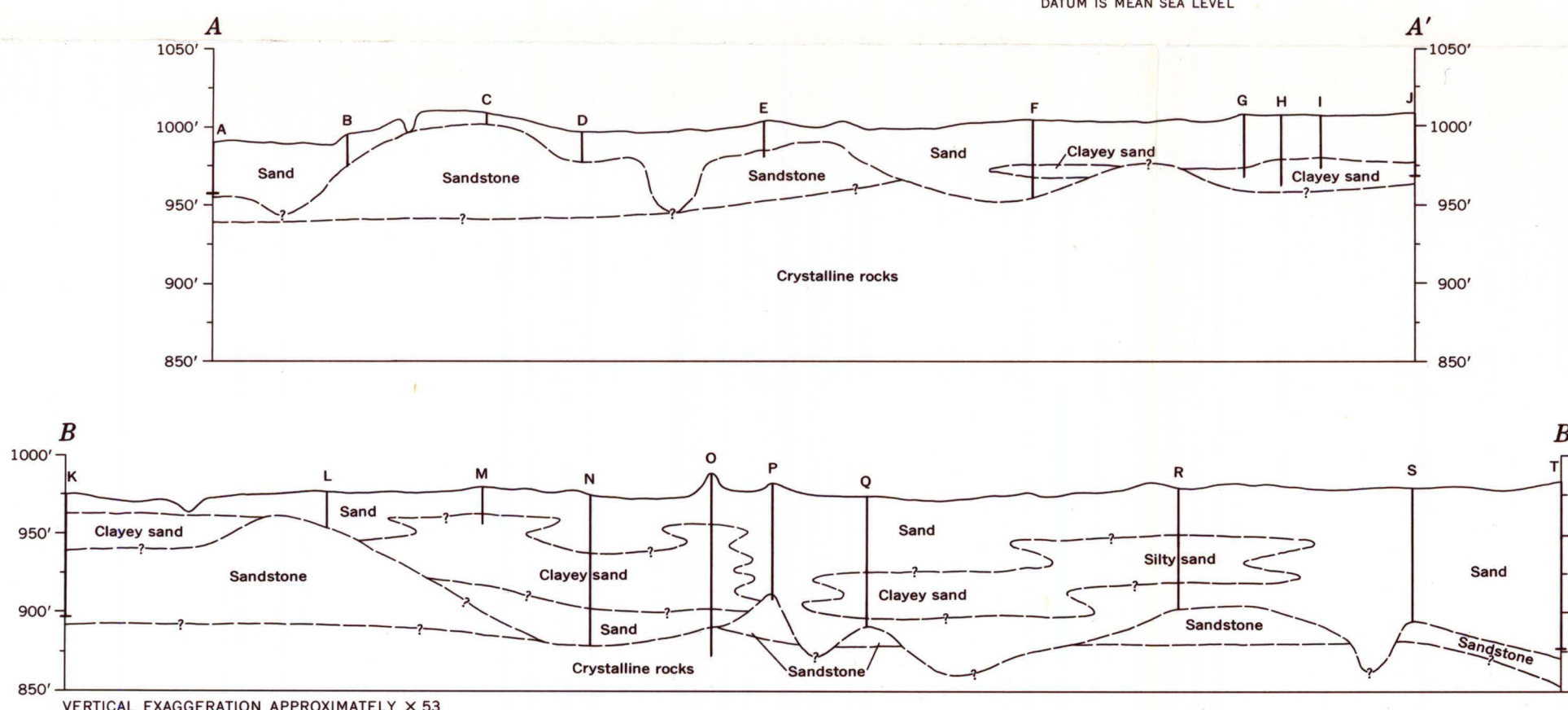
Base from U.S. Geological Survey, 1:48,000
Pittsville and Wisconsin Rapids, 1957,
and Arkdale and Necedah, 1958

SCALE 1:62 500

Geology by L. J. Hamilton, 1966



DATUM IS MEAN SEA LEVEL



EXPLANATION

- Area where a well yielding 500 gallons per minute or more may be constructed in unconsolidated deposits
- Line of equal thickness of unconsolidated deposits
Dashed where approximately located. Interval 20 feet
- Water well or test hole penetrating bedrock
Number is thickness, in feet, of unconsolidated deposits
- Water well or test hole ending above bedrock
Number is thickness, in feet, of unconsolidated deposits
- Ground-water divide
Approximately located
- Line of geologic section
Showing control wells

MAP SHOWING THE THICKNESS OF UNCONSOLIDATED DEPOSITS AND POTENTIAL WELL YIELDS
IN THE CRANMOOR AREA, CENTRAL WISCONSIN

VERTICAL EXAGGERATION APPROXIMATELY X 53