

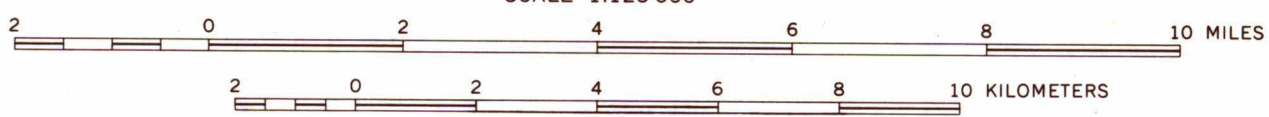
EXPLANATION

— 300 —
Line of equal yield for 30 days' continuous pumping with drawdown not to exceed two-thirds the aquifer thickness
Dashed where approximately located. Interval 300 and 600 gallons per minute
T—as shown in map of transmissivity
S=0.1

— Boundary of report area

Base from Minnesota Department of Highways county road maps, 1966

SCALE 1:125 000



APPROXIMATE MEAN DECLINATION, 1922

MAP SHOWING THEORETICAL MAXIMUM POSSIBLE YIELDS FROM THE PRINCIPAL AQUIFER IN THE PERHAM AREA, OTTER TAIL COUNTY, MINNESOTA