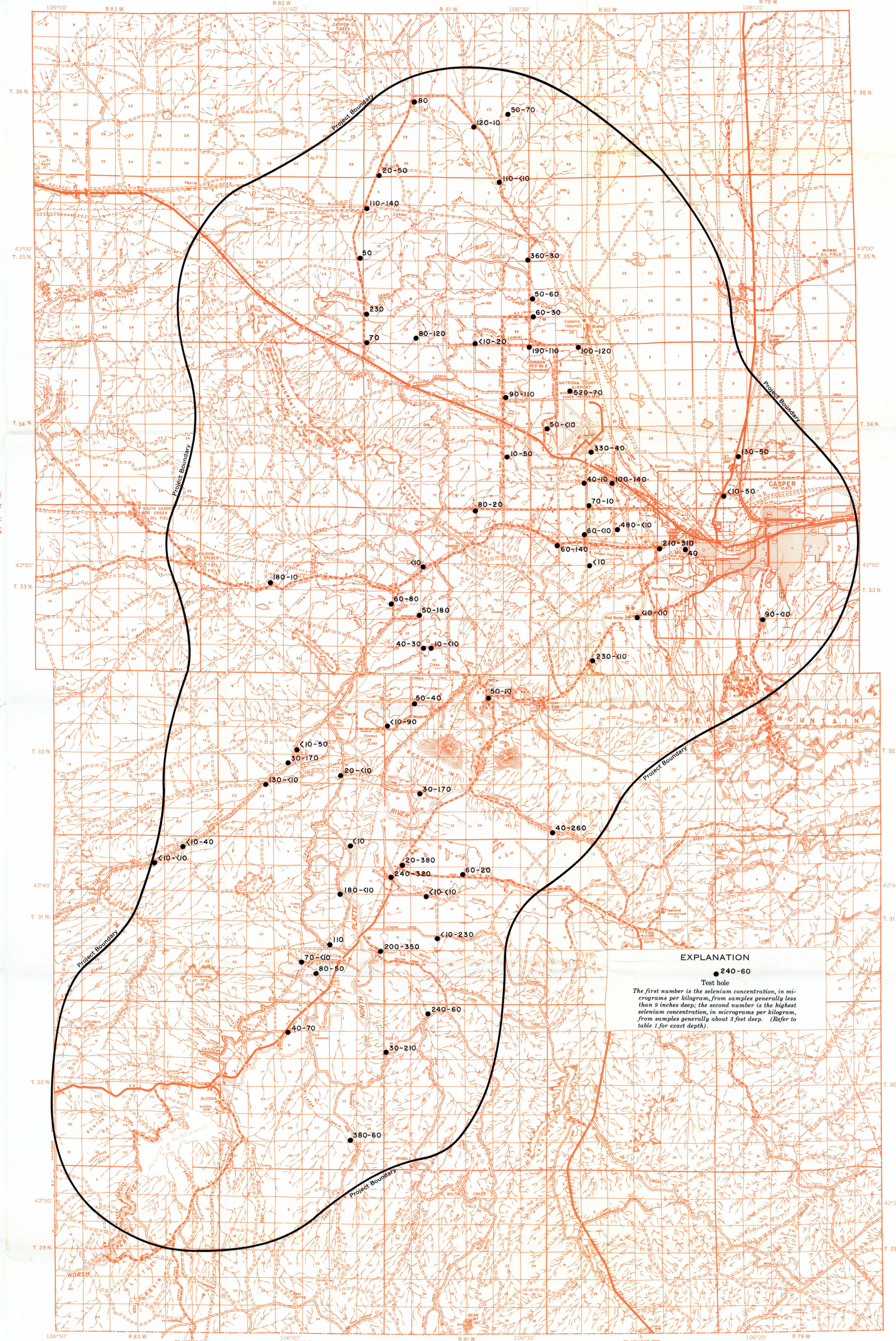


Hydrology by Marvin A. Crist, 1971

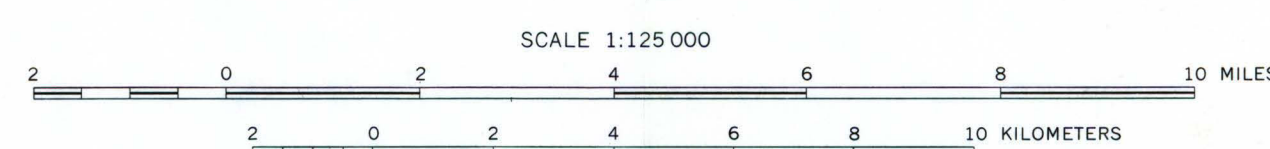
Base map prepared and copyrighted by the Wyoming Highway Department, 1956, with all rights reserved; published with permission

A. LOCATION OF SELECTED SAMPLING STATIONS USED FOR SELENIUM ANALYSIS OF GROUND AND SURFACE WATER



Prepared by Marvin A. Crist, 1971

B. DISTRIBUTION AND RANGES OF SELENIUM CONCENTRATION IN ROCK SAMPLES ABOVE THE WATER TABLE



HYDROLOGIC MAPS OF THE AREA OF SELENIUM INVESTIGATION IN NATRONA COUNTY, WYOMING