[illegible]

Base from U.S. Geological Survey
Goodrich East, 1:24,000, 1978,
and Hurdsfield, 1:24,000, 1978.

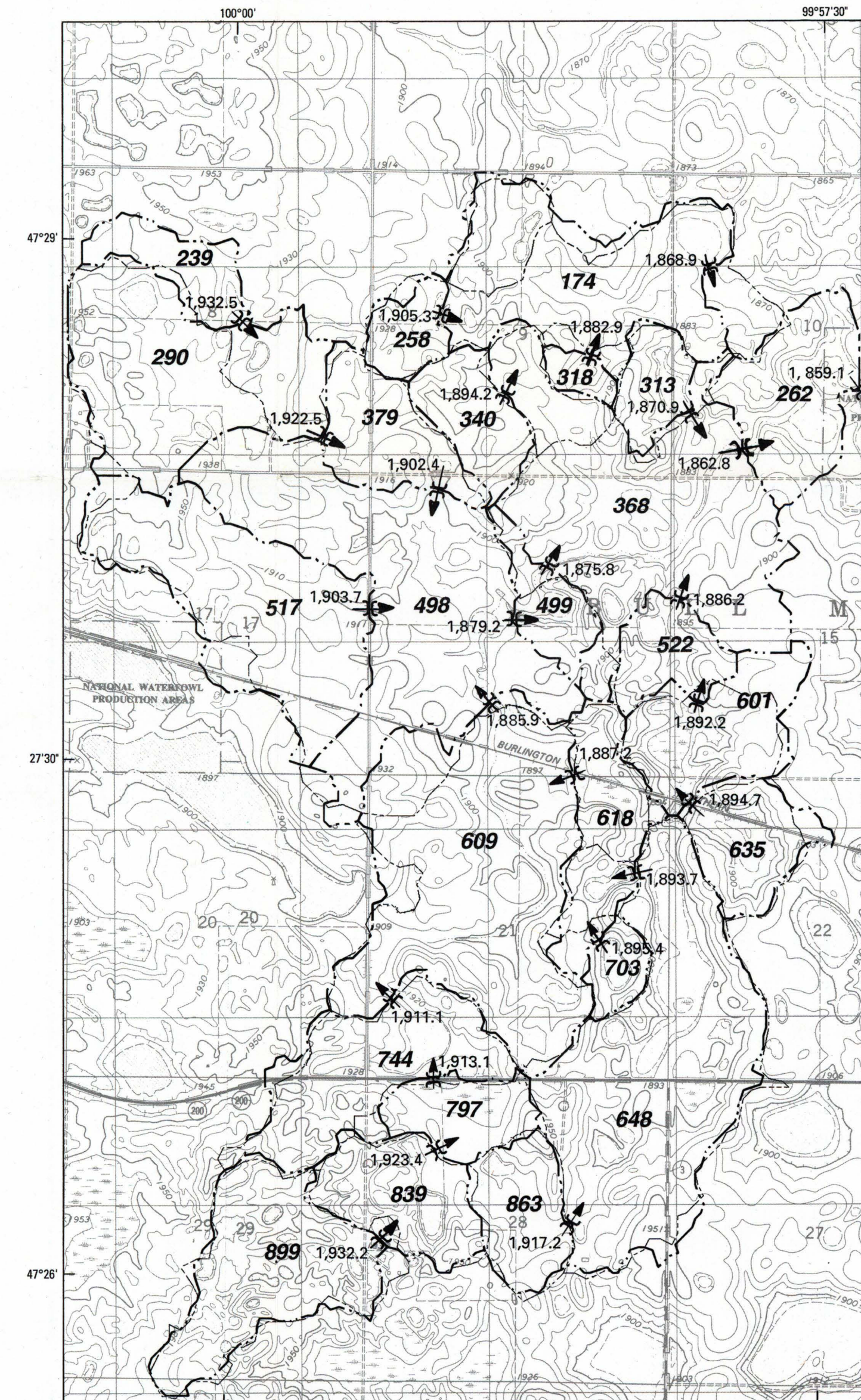
SCALE 1:24 000

1 1/2 0 1 MILE

1 5 0 1 KILOMETER

CONTOUR INTERVALS 5 AND 10 FEET
NATIONAL GEODETIC VERTICAL DATUM OF 1929

NORTH DAKOTA



By
Gregg J. Wiche, Susan K. Jensen, Joseph V. Baglio, and Julia O. Domingue
1992