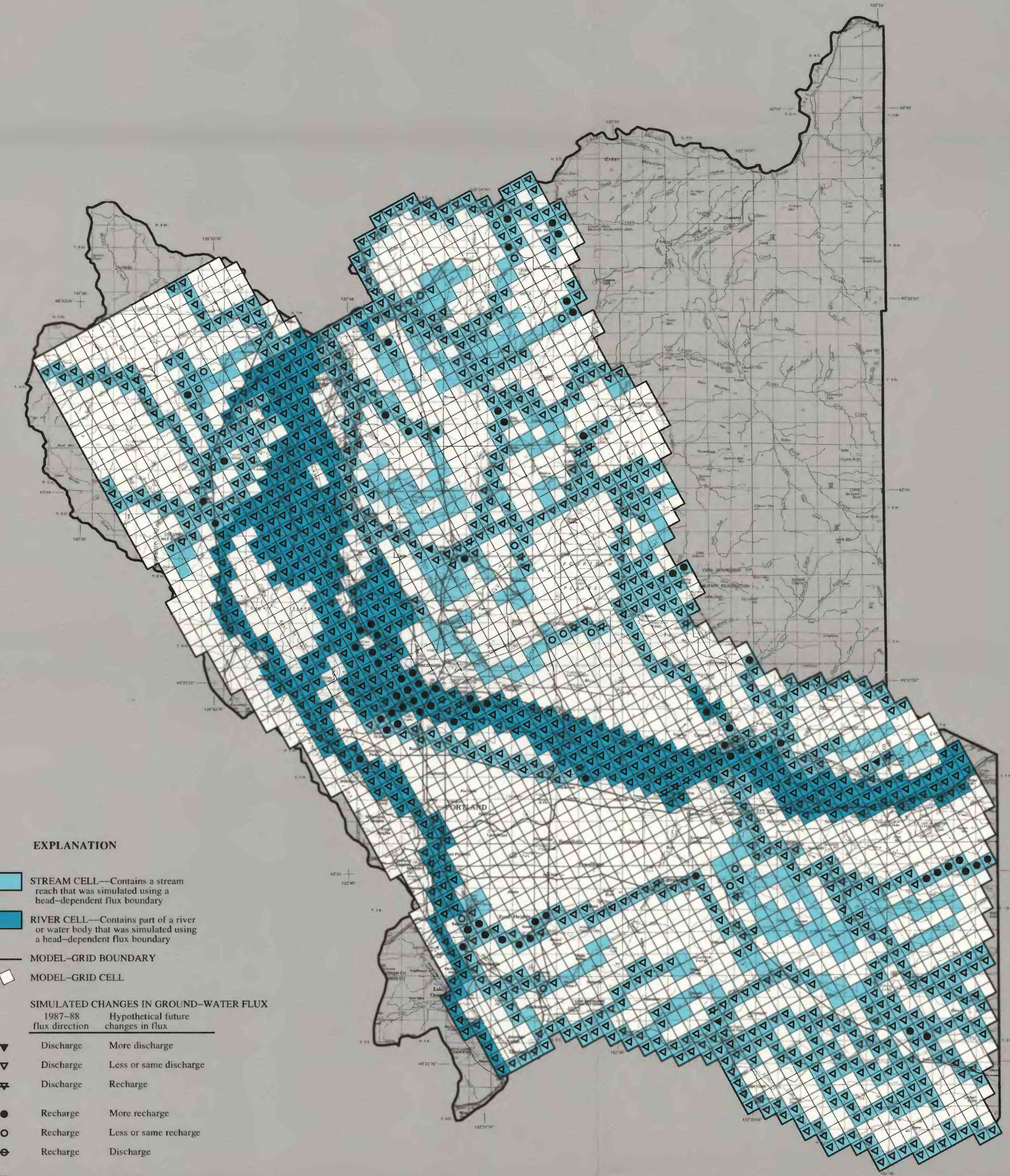
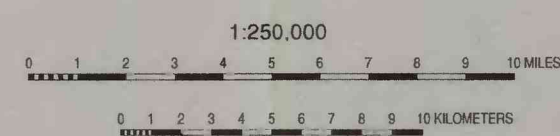


CHANGES IN SIMULATED GROUND-WATER FLUX BETWEEN  
PREDEVELOPMENT AND 1987-88 CONDITIONS



CHANGES IN SIMULATED GROUND-WATER FLUX BETWEEN  
1987-88 AND HYPOTHETICAL FUTURE CONDITIONS



MAPS SHOWING CHANGES IN SIMULATED GROUND-WATER FLUX TO RIVERS AND STREAMS BETWEEN  
PREDEVELOPMENT, 1987-88, AND HYPOTHETICAL FUTURE CONDITIONS

By  
David S. Morgan and William D. McFarland